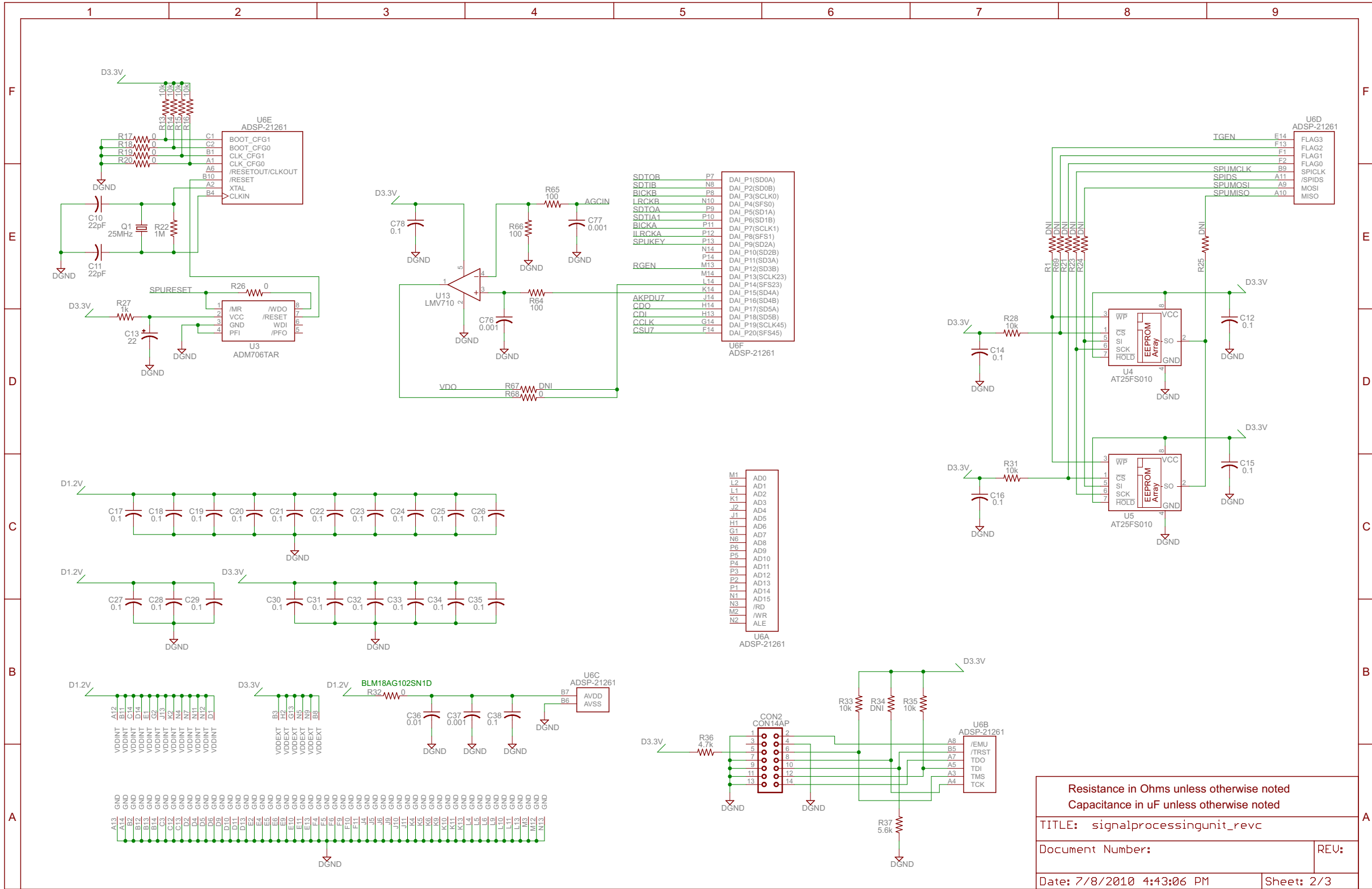


ADD SERIES RESISTORS IN DATA LINES BETWEEN CODEC AND DSP

Resistance in Ohms unless otherwise noted	
Capacitance in uF unless otherwise noted	
TITLE: signalprocessingunit_revC	
Document Number:	REV:
Date: 7/8/2010 4:43:06 PM	Sheet: 1/3



U6E
ADSP-21261

BOOT_CFG1
BOOT_CFG0
CLK_CFG1
CLK_CFG0
/RESETOUT/CLKOUT
/RESET
XTAL
CLKIN

P7 DAI_P1(SD0A)
P8 DAI_P2(SD0B)
P9 DAI_P3(SCLK0)
N10 DAI_P4(SFS0)
P10 DAI_P5(SD1A)
P11 DAI_P6(SD1B)
P12 DAI_P7(SCLK1)
P13 DAI_P8(SFS1)
N14 DAI_P9(SD2A)
P14 DAI_P10(SD2B)
M13 DAI_P11(SD3A)
M14 DAI_P12(SD3B)
L14 DAI_P13(SCLK23)
K14 DAI_P14(SFS23)
J14 DAI_P15(SD4A)
H14 DAI_P16(SD4B)
H13 DAI_P17(SD5A)
G14 DAI_P18(SD5B)
G14 DAI_P19(SCLK45)
F14 DAI_P20(SFS45)

U6F
ADSP-21261

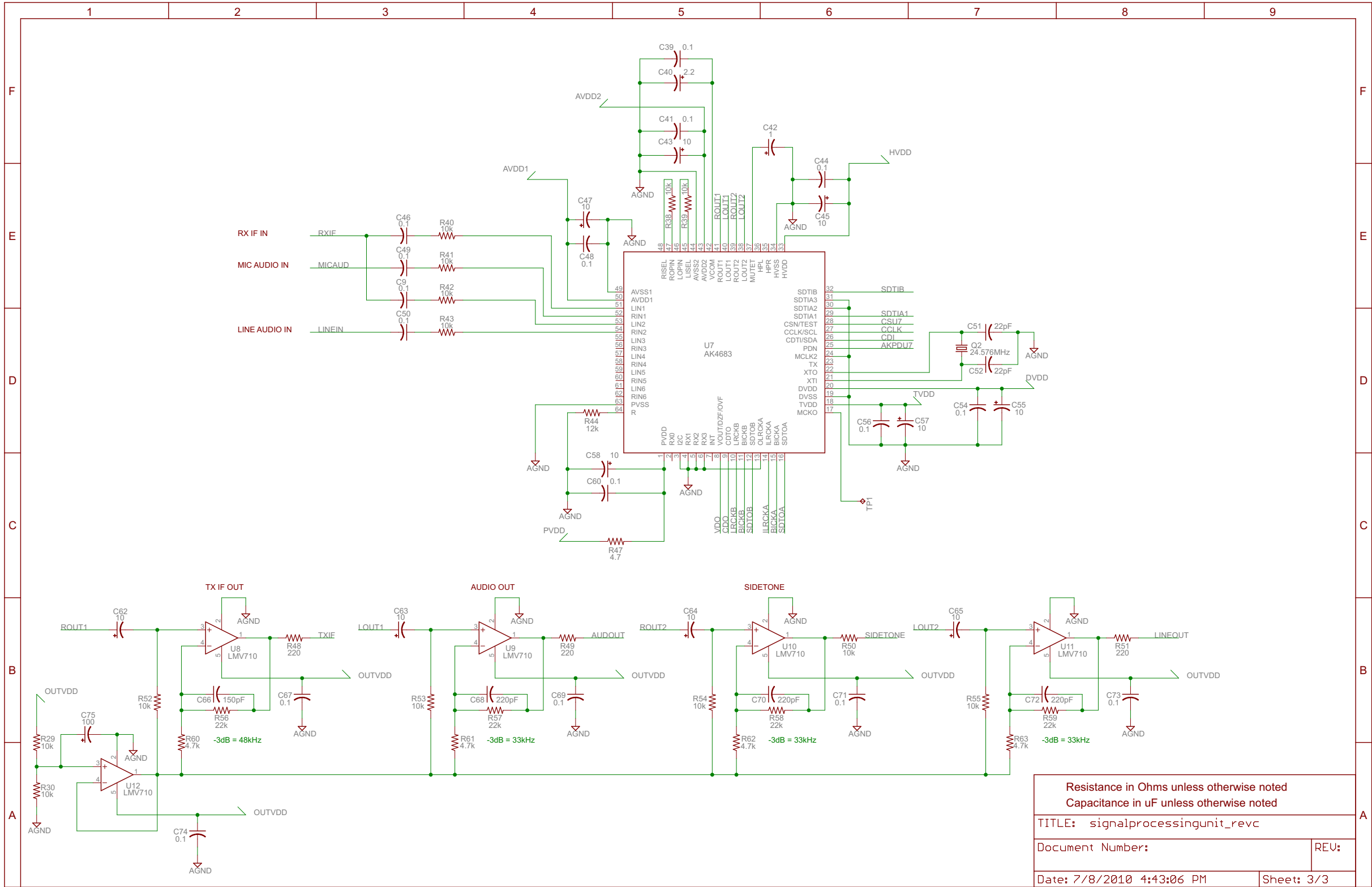
M1 AD0
L2 AD1
L1 AD2
K1 AD3
J2 AD4
J1 AD5
H1 AD6
G1 AD7
N6 AD8
P6 AD9
P5 AD10
P4 AD11
P3 AD12
P2 AD13
P1 AD14
N1 AD15
N3 /RD
M2 /WR
N2 ALE

U6A
ADSP-21261

U6D
ADSP-21261

FLAG3
FLAG2
FLAG1
FLAG0
SPICLK
/SPIDS
MOSI
MISO

Resistance in Ohms unless otherwise noted	
Capacitance in uF unless otherwise noted	
TITLE: signalprocessingunit_revC	
Document Number:	REV:
Date: 7/8/2010 4:43:06 PM	Sheet: 2/3



Resistance in Ohms unless otherwise noted	
Capacitance in uF unless otherwise noted	
TITLE: signalprocessingunit_revC	
Document Number:	REV:
Date: 7/8/2010 4:43:06 PM	Sheet: 3/3